



# GAT MONTHLY MEMBERSHIP PROGRESS REPORT

Results as of: 3/31/2021

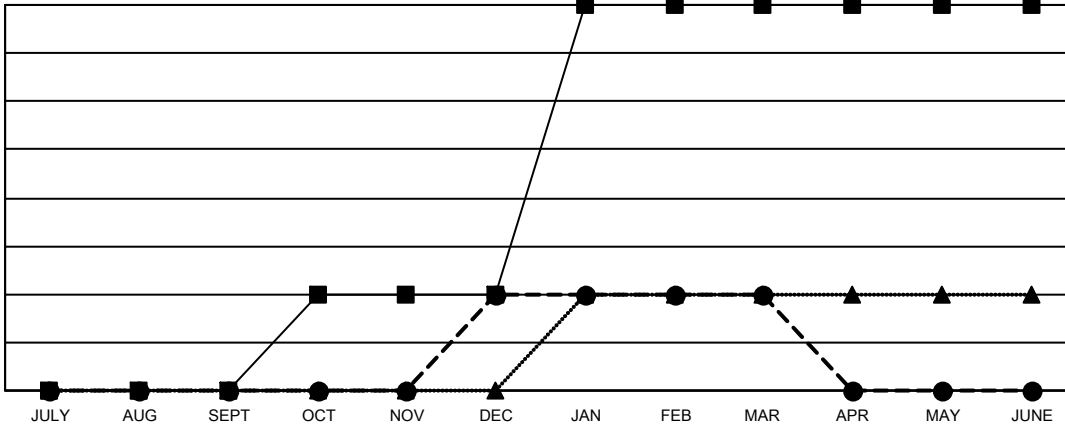
Multiple District 29

LOCATION: WEST VIRGINIA

Clubs			
RESULTS FOR 2020-2021			
QUARTER	NEW CLUB GOAL	NEW CLUBS	DROPPED CLUBS
JULY/AUG/SEPT	0	0	0
OCT/NOV/DEC	1	1	0
JAN/FEB/MAR	3	0	2
APR/MAY/JUNE	0	0	0

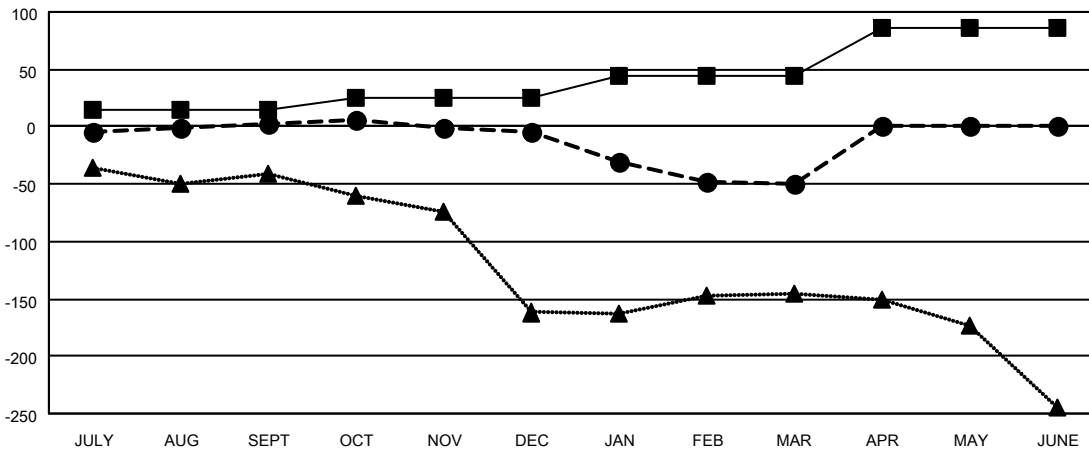
Members			
RESULTS FOR 2020-2021			
QUARTER	MEMBER GROWTH NET GOAL	MEMBER GROWTH ACTUAL	DROPPED MEMBERS ACTUAL (including transfers)
JULY/AUG/SEPT	15	82	68
OCT/NOV/DEC	10	102	94
JAN/FEB/MAR	20	36	79
APR/MAY/JUNE	41	0	0

GOALS AND ACTUAL NEW CLUBS CUMULATIVE



- - CURRENT YEAR GOALS FOR NEW CLUBS
- - CURRENT YEAR ACTUAL NEW CLUBS
- ▲ - LAST YEAR ACTUAL NEW CLUBS

GOALS AND ACTUAL MEMBERS CUMULATIVE



- - MEMBER GROWTH NET GOAL
- - MEMBER GROWTH ACTUAL
- ▲ - LAST YEAR MEMBERSHIP ACTUAL

**DROPPED CLUBS: 2**

50 CLUBS OF 167 ADDED 1 OR MORE NEW MEMBERS

GENDER DISTRIBUTION	
MALE	2,416 (63.73%)
FEMALE	1,375 (36.27%)

DROPPED MEMBERS	
DECEASED	73
CLUB CANCELLED	13
OTHER	155
<b>TOTAL</b>	<b>241</b>

[CLICK HERE FOR CUMULATIVE MEMBERSHIP DATA](#)

TOTAL FAMILY UNIT MEMBERS	1,136
FAMILY MEMBERS PAYING HALF DUES	582